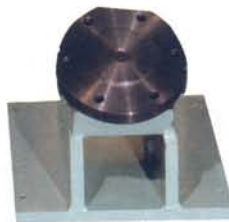




TIRE AND WHEEL TEST MACHINES



IMPACT

WHEEL TEST MACHINE

FEATURES:

- Electric / Pneumatic activated weight release
- Safety Grating or Gates on all sides of the machine
- Safety Holder Bar complete with interlocks to hold weights in place during machine setup
- Bases and Strikers available for ISO, SAE, and Custom applications
- Weights with Handles to allow easier machine setup — no weight more than 50 pounds
- Motorized Hoist to lift weights and striker into position
- Standard equipment includes a 9 inch measuring tool and a hand truck to move bases easily, a wheel adapter, with choice of bolt circle(s)
- Up to 14 inch Drop Height Standard

SPECIAL CAPABILITIES:

- Up to 24 inch drop height
- Digital Display of Tire Contained Air Pressure
- Inflation System for adjusting Contained Air Pressure
- Remote Air Inflate / Deflate for Safety
- Impact Velocity Measurement System
GM Approved

STL *STANDARDS TESTING LABORATORIES INC.*
FM TEST MACHINE DIVISION

P.O. BOX 592 • MASSILLON, OHIO 44648 U.S.A. • PHONE 216-833-8548
DIRECT AKRON PHONE 216-253-1901 • TELEX 983453 • FAX 216-833-7902